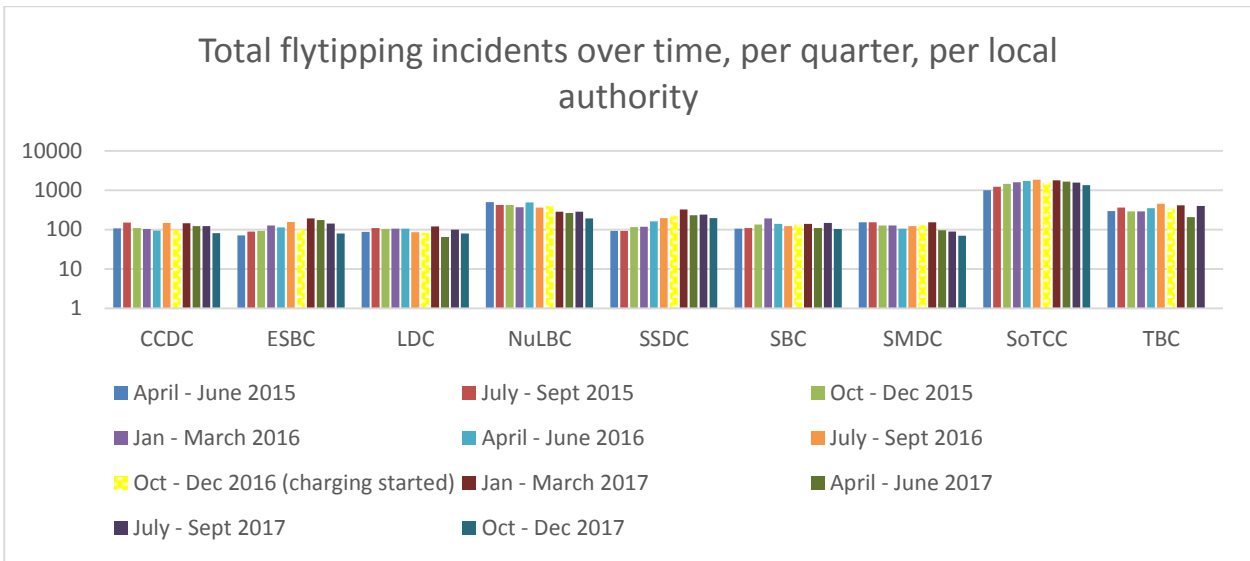
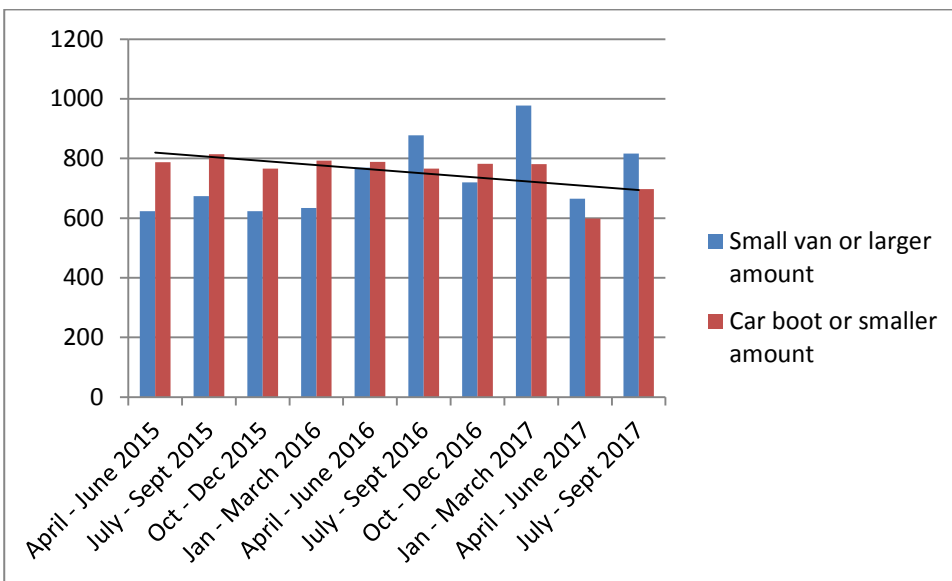


Appendix B: Fly Tipping Analysis



Total Number of Fly Tipping Incidents



Number of Fly Tipping Incidents by Size

All authorities		April - June 2015	July - Sept 2015	Oct - Dec 2015	Jan - March 2016	April - June 2016	July - Sept 2016	Oct - Dec 2016	Jan - March 2017	April - June 2017	July - Sept 2017
Primary waste type category	Animal Carcass	26	20	25	25	42	14	18	13	11	18
	Construction	120	140	119	122	134	127	110	136	118	157
	Green	94	95	59	62	66	85	56	59	63	80
	Commerical black bags	17	10	14	14	13	21	27	14	12	9
	Vehicle parts	21	8	28	20	24	19	37	35	13	28
	Household black bags	214	257	179	146	241	212	213	235	149	131
	White goods	126	157	164	180	163	206	158	204	168	201
	Chemical drums / oil / fuel	5	6	6	8	8	9	8	13	5	5
	Other electrical	21	23	40	30	25	25	32	19	19	15
	Other household waste	495	541	537	570	619	642	584	798	534	719
	Tyres	42	43	38	60	50	45	63	61	50	39
	Other commerical waste	66	41	91	74	35	44	71	63	35	36
	Asbestos	8	16	8	18	19	26	13	19	15	8
	Other (unidentified)	151	125	102	109	108	151	107	83	62	60
Clinical	6	6	5	9	13	18	5	4	9	7	
Total		1412	1488	1415	1447	1560	1644	1502	1756	1263	1513

Number of Fly Tipping Incidents by Material Type